



## Body-Mind Centering® Certified Programs Application Guidelines for Scholarships

Applications are open for the following courses:

- **10 Scholarships for studying Combined SME & IDME Programs.** For people committed to study the Somatic Movement Educator and Infant Movement Developmental Education Programs.
- **5 Scholarships to study Complete SME Program.** For people willing to study the complete Somatic Movement Education (SME)
- **5 Scholarships to study Complete IDME Program.** For those intending to complete the Infant Developmental Movement Education Program

The following are prerequisites to obtain the scholarship:

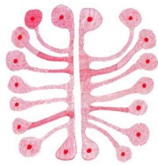
- Residing in Spain for the duration of the scholarship.
- Residing in a country where there is no BMC® Certified Program.
- Residing in a country with a sensitive economy.
- Experiencing financial hardship enabling to cover the program fees.
- Committing to the completion of the chosen program.
- Accepting the conditions of the scholarship program, based in a collaborative exchange with Movimiento Atlas.

The scholarship program intention is to enhance the development of mutual support to facilitate both individual and collective growth and the dissemination of BMC® in. The cooperation policy will attend always to personal availability and interests, building up compromises within the freedom and respect in the associative context.

The price of the training is standard for all European BMC® Certificated Programs **The scholarships imply a reduction of the 15% in the SME program and a 17% in the 4 specific IDME modules. Scholarships do not apply to expenses such as travelling, lodging, diets and the completion of the homework package.**

Conditions for Scholarships:

- In the IDME program, under exceptional circumstances, missing one course is allowed without losing the scholarship. Not assisting to two modules implies losing the scholarship. Cancellation of the scholarship implies payment of the amount discounted in the modules undertaken to the moment of cancellation.
- Both in the SME program and the combined SME & IDME programs, under exceptional circumstances, it is allowed to lose two modules without losing the scholarship. Not assisting to three modules implies losing the scholarship. Cancellation of the scholarship implies payment of the amount discounted in the modules undertaken to the moment of cancellation.



**Movimiento Atlas**  
Jerónimo Blancas 4, 1ªA  
50001 Zaragoza, España  
(+34) 673 735 565  
[info@movimientoatlas.com](mailto:info@movimientoatlas.com)  
[www.movimientoatlas.com](http://www.movimientoatlas.com)

- The person granted with a scholarship establishes a compromise to plan and implement a fair, balanced exchange with Movimiento Atlas.

To apply for Scholarship, please send us the following information to [info@movimientoatlas.com](mailto:info@movimientoatlas.com).

1. Name, birth date and CV.
2. Programs you are interested in: SME, IDME, or both
3. Motivation letter explaining the reasons why you apply for the scholarship and why you consider yourself a good candidate.
4. In which areas and/ or activities do you think you could collaborate with Movimiento Atlas? Some of this areas have previously included:
  - Documentation: keeping visual, written record of the process of the programs.
  - Communication and dissemination: support to spread the work and maintain publications in social media, website, blog, design of advertising materials such as flyers, posters
  - Logistics: setting up, keeping up and clearing out the studio...
  - Translation: supporting the translation of texts, videos and other materials.

If you have any other ideas or ways in which you could participate and contribute to the program feel free to include them. Once we receive this information we will schedule a personal interview on Skype to clear any questions on both sides.

For further information do not hesitate contacting us,

Best regards,

**Patricia Gracia**  
Program Director